

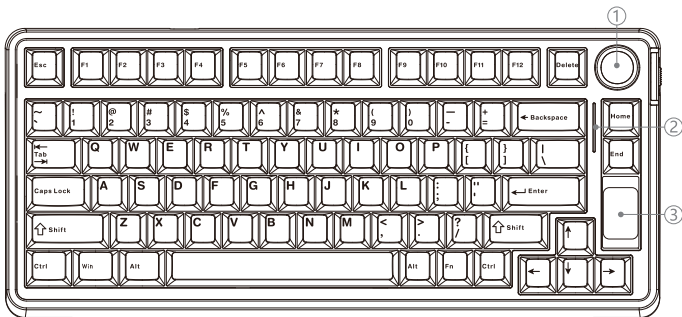


BT USB 2.4G

***S75* PRO**

S75Pro Tri-Mode Mechanical Keyboard

Keyboard Function Description



① Screen Knob, Lock Screen /
Volume Mode

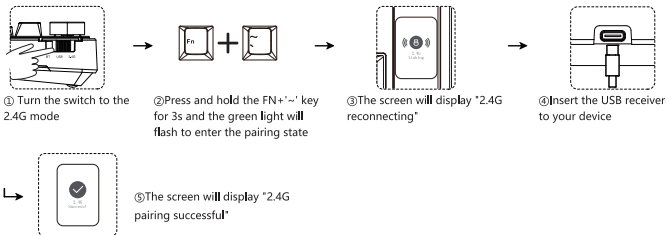
② RGB Light Strip

③ 1.14-inch LCD Screen

- Stylish appearance design with a gasket mount structure for a soft and delicate typing feel.
- The keycaps (optional) and mechanical switches (optional) are hot-swappable, allowing users to freely customize with various switches and personalized keycaps available on the market.
- The keyboard is built with solid materials and offers highly responsive keystrokes.
- Ergonomic keyboard design, providing a series of practical shortcut keys when combined with the Fn key.
- Type-C connection ensures more reliable performance and faster charging.
- In USB and 2.4G modes, custom functions can be configured via the driver and saved to onboard memory.
- Keyboard polling rate: Wired mode 1000Hz, 2.4G mode 1000Hz, BT mode 125Hz.
- The multi-function knob works together with the screen to adjust system settings, lighting effects, multimedia volume, and language.
- RGB effects and colors can be adjusted via the driver or the knob.
- The custom driver allows you to set key combinations, macro editing, lighting settings, display time/date, and upload custom GIFs.
- Large 4000mAh lithium battery supports repeated charging, extending battery lifespan.

Note: Please use the driver under Windows systems and in wired mode.

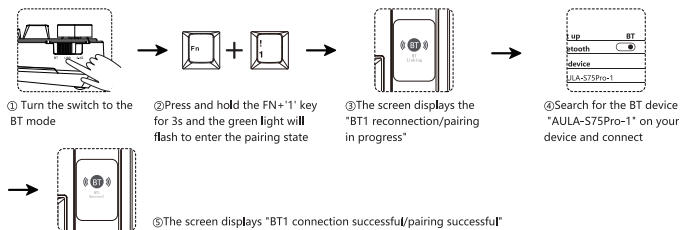
2.4G Connection Instructions



Attention: When connecting to 2.4G, search first and then plug in the receiver. The factory default code has been matched.

The corresponding icon on the TFT screen main menu will also be highlighted after successful connection.

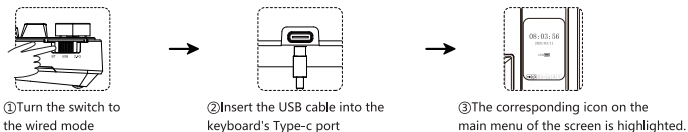
BT Connection Instructions

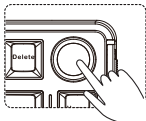


Note: Press Fn + number key 1/2/3 to switch devices

The corresponding icon on the TFT screen main menu will also be highlighted after successful connection.

USB Connection Instructions





- Rotate the knob to scroll to the "Light Color" mode on the TFT screen and switch between RGB, red, orange, yellow, green, cyan, blue, purple, and white.
- Rotate the knob to scroll to the "Light Brightness" mode on the TFT screen and switch to 5 brightness levels, with each level being 20%. Rotate the knob clockwise to turn the light brightness+ and counterclockwise to turn the light brightness -.
- Rotate the knob to scroll to the "Light Speed" mode on the TFT screen and switch to 5 speed levels, with each level being 20%. Rotate the knob clockwise for light speed+ and counterclockwise for light speed -.

Fn +	\	Light mode switching
	TAB	Color switching
	Z	Switch the ambient light mode
	/?	Switch the color of the light bar
	↑	Brightness+
	↓	Brightness-

Fn +	Right Shift	Switch light bar mode
	Right Alt	Cycle to switch the brightness of the light bar
	Right Ctrl	Loop light bar speed
	←	speed-
	→	speed+

Other Function Description

Knob Function Description

- Rotate the knob to scroll to the "volume adjustment" mode on the TFT screen. Turn the volume up clockwise and down counterclockwise, and the corresponding volume icon will flash.
- Rotate the knob to scroll to the "Language Selection" mode on the TFT screen and switch between English/Chinese.
- Rotate the knob to enter "System Switch" on the TFT screen, with a total of four systems to choose from: "WIN", "MAC", "IOS", and "Android". After switching to the Mac/iOS system, the positions of WIN and ALT are swapped, and Mac/iOS does not lock WIN.

TFT Screen Function

- The right side of the keyboard is equipped with a 1.14-inch TFT display screen, which has various functions and can be used with DIY drivers.
- The knob and buttons in the upper right corner of the keyboard can be used in conjunction with the TFT screen. The knob can be rotated to adjust the menu, and short pressing the knob will confirm and return to the previous menu.
- TFT keyboard screen with time display and calendar display. If the power switch is turned off during factory or normal use, it is necessary to turn on the power switch and calibrate the time and calendar with a driver.
- The keyboard TFT screen displays the battery life, making it easy to see the charging and remaining battery levels at a glance.

System Switching

07

- Rotate the knob to enter "System Switch" on the TFT screen, with a total of four systems to choose from: "WIN", "MAC", "IOS", and "Android". After switching to the MAC/IOS system, the positions of WIN and ALT are swapped, and Mac/IOS does not lock WIN.
- Switch to Mac/IOS system and switch button positions (without locking WIN as shown in the table below):

WIN/Android	Left WIN	Left ALT	Right ALT	Right CTRL
Mac/IOS	Left Option	Left Command	Right Command	Right Option

Roller Dual-mode Function

08

Long press Fn+scroll key to switch knob function (adjust volume/screen).

Standard Version Shortcut Key Instructions

Fn+	ESC	Restore Default	Fn+	WIN-L	Lock WIN
	U	PRTSC		HOME	PGUP
	I	SCRLK		END	PGDN
	O	PAUSE		DEL	INS
	wheel key	Volume mode			

- Press FN+ESC to restore the factory default light mode, and the previously connected BT device will not be cleared after saving
- Android system, F-zone single press function and F-zone FN combination function.

Key position	Single press	Fn combination	Key position	Single press	Fn combination
F1	Screen brightness-	F1	F7	Previous song	F7
F2	Screen brightness+	F2	F8	play/pause	F8
F3	Convert Window	F3	F9	Next song	F9
F4	Return to desktop	F4	F10	Mute	F10
F5	Main backlight brightness-	F5	F11	Volume-	F11
F6	Main backlight brightness+	F6	F12	Volume+	F12

- Windows system, F-zone single press function and F-zone FN combination function.

Key position	Single press	Fn combination	Key position	Single press	Fn combination
F1	F1	Screen brightness-	F7	F7	Previous song
F2	F2	Screen brightness+	F8	F8	play/pause
F3	F3	Convert Window	F9	F9	Next song
F4	F4	Return to desktop	F10	F10	Mute
F5	F5	Main backlight brightness-	F11	F11	Volume-
F6	F6	Main backlight brightness+	F12	F12	Volume+

- Mac system, F-zone single press function and F-zone FN combination function.

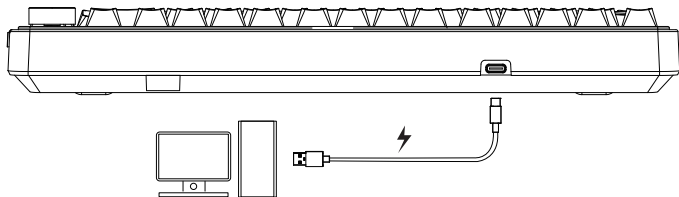
Key position	Single press	Fn combination	Key position	Single press	Fn combination
F1	Screen brightness-	F1	F7	Previous song	F7
F2	Screen brightness+	F2	F8	Play/Pause	F8
F3	Convert Window	F3	F9	Next song	F9
F4	Return to desktop	F4	F10	Mute	F10
F5	Main backlight brightness-	F5	F11	Volume-	F11
F6	Main backlight brightness+	F6	F12	Volume+	F12

- IOS system, F-zone single press function and F-zone FN combination function.



Key position	Single press	Fn combination	Key position	Single press	Fn combination
F1	Screen brightness-	F1	F7	Previous song	F7
F2	Screen brightness+	F2	F8	Play/Pause	F8
			F9	Next song	F9
F4	Return to desktop	F4	F10	Mute	F10
F5	Main backlight brightness-	F5	F11	Volume-	F11
F6	Main backlight brightness+	F6	F12	Volume+	F12

Charging Instructions

10



- In BT/2.4G mode, if there is no operation for 1 minute, it will automatically enter power-saving mode. Click the button to wake up the keyboard.
- Built in 1*4000mAh large capacity lithium battery for cyclic charging, with power switch, environmentally friendly and energy-saving, effectively extending battery life.

 	<ol style="list-style-type: none"> 1. It is recommended to use only the computer USB port to charge the keyboard. 2. Do not use fast-charging cell phone chargers to charge the keyboard. 3. Do not use inferior non-standard power adapter to charge the keyboard. 4. Do not use over-voltage and over-current power adapter to charge the keyboard. 5. Please keep away from high temperature equipment when charging 6. Please turn off the power switch if it is not used for a long time.
<p>Charging instructions</p>	<p>The above charging instructions also apply to other devices with charging function (keyboard/mouse/headphones/speakers, etc.)</p>

- Number of Keys: 80 keys
- Total Key Travel: 4.0mm
- Multi-Function FN Key
- Product Dimensions: 333.29 × 147.39 × 43.17 ±0.5mm
- Product Weight: Approx. 958.5g (excluding cable/receiver) / Approx. 1007.5g (including cable/receiver)
- Charging Voltage/Current: DC 5V ■■■ 1500mA
- Rated Current: ≤200mA @3.7V (default lighting) / ≤60mA (backlight off)
- Battery Life: ≥30 hours (default lighting) / ≥80 hours (backlight off)
- Battery Capacity: 4000mAh rechargeable lithium battery
- Charging Time: Approx. 4 hours
- System Requirements:

Wired / 2.4G Mode: Compatible with all Windows operating systems (WIN XP, WIN7, WIN8, WIN10).
(Driver may be required for WIN95 or WIN98.)

BT Mode: Compatible with Mac computers, Android phones/tablets, and iOS devices supporting BT3.0, BT4.0, BT5.0 or above.

- Hardware Connection:

Wired USB and 2.4G receiver support hot-swapping (plug and play).

In BT mode, switch to the corresponding channel and pair with the BT device to use.

제품 매개변수

- 키 수: 80키
- 총 키 스트로크: 4.0mm
- 다기능 FN 키
- 제품 크기: 333.29 × 147.39 × 43.17 ±0.5mm
- 제품 무게: 약 958.5g (케이블/수신기 제외) / 약 1007.5g (케이블/수신기 포함)
- 충전 전압/전류: DC 5V ■■■ 1500mA
- 정격 전류: ≤200mA @3.7V (기본 조명) / ≤60mA (백라이트 꺼짐)
- 배터리 수명: ≥30시간 (기본 조명) / ≥80시간 (백라이트 꺼짐)
- 배터리 용량: 4000mAh 충전식 리튬 배터리
- 충전 시간: 약 4시간
- 시스템 요구 사항:

유선 / 2.4G 모드: 모든 Windows 운영 체제와 호환 (WIN XP, WIN7, WIN8, WIN10).
(WIN95 및 WIN98의 경우 드라이버가 필요할 수 있음.)

BT 모드: BT3.0, BT4.0, BT5.0 이상을 지원하는 Mac 컴퓨터, Android 스마트폰/태블릿 및 iOS 기기와 호환

- 하드웨어 연결:

유선 USB 및 2.4G 수신기는 핫스왑(플러그 앤 플레이)을 지원

BT 모드에서는 해당 채널로 전환 후 BT 장치와 페어링하여 사용

Parâmetros do produto



- Número de Teclas: 80 teclas
- Curso Total da Tecla: 4,0mm
- Tecla FN Multifuncional
- Dimensões do Produto: 333,29 × 147,39 × 43,17 ±0,5mm
- Peso do Produto: Aprox. 958,5g (sem cabo/receptor) / Aprox. 1007,5g (com cabo/receptor)
- Tensão/ Corrente de Carregamento: DC 5V ■■■ 1500mA
- Corrente Nominal: ≤200mA @3,7V (iluminação padrão) / ≤60mA (luz de fundo desligada)
- Duração da Bateria: ≥30 horas (iluminação padrão) / ≥80 horas (luz de fundo desligada)
- Capacidade da Bateria: Bateria de lítio recarregável de 4000mAh
- Tempo de Carregamento: Aprox. 4 horas
- Requisitos do Sistema:

Modo com Fio / 2.4G: Compatível com todos os sistemas Windows (WIN XP, WIN7, WIN8, WIN10).

(Pode ser necessário driver para WIN95 e WIN98.)

Modo BT: Compatível com computadores Mac, smartphones/tablets Android e dispositivos iOS com suporte a BT3.0, BT4.0, BT5.0 ou superior

- Conexão de Hardware:

USB com fio e receptor 2.4G suportam hot-swap (plug and play)

No modo BT, selecione o canal correspondente e emparelhe com o dispositivo BT para usar

Parámetros del producto



- Número de teclas: 80 teclas
- Recorrido total de la tecla: 4,0mm
- Tecla FN multifunción
- Dimensiones del producto: 333,29 × 147,39 × 43,17 ±0,5mm
- Peso del producto: Aprox. 958,5g (sin cable/receptor) / Aprox. 1007,5g (con cable/receptor)
- Voltaje/Corriente de carga: DC 5V ■■■ 1500mA
- Corriente nominal: ≤200mA @3,7V (retroiluminación predeterminada) / ≤60mA (retroiluminación apagada)
- Duración de la batería: ≥30 horas (retroiluminación predeterminada) / ≥80 horas (retroiluminación apagada)
- Capacidad de la batería: Bateria de litio recargable de 4000mAh
- Tiempo de carga: Aprox. 4 horas
- Requisitos del sistema:

Modo cableado / 2.4G: Compatible con todos los sistemas operativos Windows (WIN XP, WIN7, WIN8, WIN10).(Puede requerir un controlador para WIN95 y WIN98.)

Modo BT: Compatible con ordenadores Mac, teléfonos/tabletas Android y dispositivos iOS con BT3.0, BT4.0, BT5.0 o superior

- Conexión de hardware:

USB cableado y receptor 2.4G admiten hot-swap (plug and play)

En modo BT, seleccione el canal correspondiente y empareje con el dispositivo BT para usar

- Anzahl der Tasten: 80 Tasten
- Gesamter Tastenhub: 4,0mm
- Multifunktionale FN-Taste
- Produktabmessungen: 333,29 × 147,39 × 43,17 ±0,5mm
- Produktgewicht: Ca. 958,5g (ohne Kabel/Empfänger) / Ca. 1007,5g (mit Kabel/Empfänger)
- Ladespannung/-strom: DC 5V ■■■ 1500mA
- Nennstrom: ≤200mA @3,7V (Standardbeleuchtung) / ≤60mA (Hintergrundbeleuchtung aus)
- Akkulaufzeit: ≥30 Stunden (Standardbeleuchtung) / ≥80 Stunden (Hintergrundbeleuchtung aus)
- Akkukapazität: 4000mAh wiederaufladbarer Lithium-Akku
- Ladezeit: Ca. 4 Stunden
- Systemanforderungen:

Kabelgebunden / 2.4G Modus: Kompatibel mit allen Windows-Betriebssystemen (WIN XP, WIN7, WIN8, WIN10).

(Treiber erforderlich für WIN95 und WIN98.)

BT Modus: Kompatibel mit Mac-Computern, Android-Smartphones/Tablets und iOS-Geräten mit BT3.0, BT4.0, BT5.0 oder höher

- Hardware-Verbindung:

Kabelgebundenes USB und 2.4G-Empfänger unterstützen Hot-Swap (Plug and Play)

Im BT-Modus den entsprechenden Kanal auswählen und mit dem BT-Gerät koppeln

Parametri del prodotto

- Numero di tasti: 80 tasti
- Corsa totale del tasto: 4,0mm
- Tasto FN multifunzione
- Dimensioni del prodotto: 333,29 × 147,39 × 43,17 ±0,5mm
- Peso del prodotto: Circa 958,5g (senza cavo/ricevitore) / Circa 1007,5g (con cavo/ricevitore)
- Tensione/Corrente di ricarica: DC 5V ■■■ 1500mA
- Corrente nominale: ≤200mA @3,7V (illuminazione predefinita) / ≤60mA (retroilluminazione spenta)
- Autonomia della batteria: ≥30 ore (illuminazione predefinita) / ≥80 ore (retroilluminazione spenta)
- Capacità della batteria: Batteria al litio ricaricabile da 4000mAh
- Tempo di ricarica: Circa 4 ore
- Requisiti di sistema:

Modalità cablata / 2.4G: Compatibile con tutti i sistemi Windows (WIN XP, WIN7, WIN8, WIN10).

(Può richiedere driver per WIN95 e WIN98.)

Modalità BT: Compatibile con computer Mac, smartphone/tablet Android e dispositivi iOS con BT3.0, BT4.0, BT5.0 o superiori

- Connessione hardware:

USB cablato e ricevitore 2.4G supportano hot-swap (plug and play)

In modalità BT, selezionare il canale corrispondente e accoppiare con il dispositivo BT

- Tuş Sayısı: 80 tuş
- Toplam Tuş Hareketi: 4,0mm
- Çok Fonksiyonlu FN Tuşu
- Ürün Boyutu: 333,29 × 147,39 × 43,17 ±0,5mm
- Ürün Ağırlığı: Yaklaşık 958,5g (kablo/alıcı hariç) / yaklaşık 1007,5g (kablo/alıcı dahil)
- Şarj Voltajı/Akımı: DC 5V 1500mA
- Nominal Akım: ≤200mA @3,7V (varsayılan aydınlatma) / ≤60mA (arka ışık kapalı)
- Pil Ömrü: ≥30 saat (varsayılan aydınlatma) / ≥80 saat (arka ışık kapalı)
- Pil Kapasitesi: 4000mAh şarj edilebilir lityum pil
- Şarj Süresi: Yaklaşık 4 saat
- Sistem Gereksinimleri:

Kablolu / 2.4G Modu: Tüm Windows sistemleriyle uyumlu (WIN XP, WIN7, WIN8, WIN10) (WIN95 ve WIN98 için sürücü gerekebilir)

BT Modu: Mac bilgisayarlar, Android telefon/tabletler ve BT3.0, BT4.0, BT5.0 veya üzeri destekleyen iOS cihazlar ile uyumlu

- Donanım Bağlantısı:

Kablolu USB ve 2.4G alıcı hot-swap (tak ve çalıştır) destekler

BT modunda ilgili kanalı seçin ve BT cihazı ile eşleştirin

Параметры продукта

- Количество клавиш: 80 клавиш
- Полный ход клавиши: 4,0 мм
- Многофункциональная клавиша FN
- Размеры продукта: 333,29 × 147,39 × 43,17 ±0,5 мм
- Вес продукта: Приблизительно 958,5 г (без кабеля/приемника) / приблизительно 1007,5 г (с кабелем /приемником)
- Напряжение/ток зарядки: DC 5V 1500mA
- Номинальный ток: ≤200mA @3,7V (подсветка по умолчанию) / ≤60mA (без подсветки)
- Время работы от батареи: ≥30 часов (подсветка по умолчанию) / ≥80 часов (без подсветки)
- Емкость батареи: Перезаряжаемая литиевая батарея 4000 мАч
- Время зарядки: примерно 4 часа
- Системные требования:

Проводной / 2.4G режим: Совместим со всеми версиями Windows (WIN XP, WIN7, WIN8, WIN10). (Для WIN95 и WIN98 может потребоваться драйвер.)

BT режим: Совместим с компьютерами Mac, телефонами/планшетами Android и устройствами iOS с поддержкой BT3.0, BT4.0, BT5.0 или выше

- Подключение оборудования:

Проводной USB и 2.4G приемник поддерживают горячую замену (plug and play)

В режиме BT выберите соответствующий канал и подключите устройство по BT

- จำนวนปุ่ม: 80 ปุ่ม
- ระยะการกดปุ่มทั้งหมด: 4.0 มม.
- ปุ่ม FN อเนกประสงค์
- ขนาดสินค้า: 333,29 × 147,39 × 43,17 ±0,5 มม.
- น้ำหนักสินค้า: ประมาณ 958.5 กรัม (ไม่รวมสาย/ตัวรับสัญญาณ) / ประมาณ 1007.5 กรัม (รวมสาย/ตัวรับสัญญาณ)
- แรงดัน/กระแสไฟชาร์จ: DC 5V ■■■ 1500mA
- กระแสไฟที่กำหนด: ≤200mA @3,7V (ไฟส่องสว่างเริ่มต้น) / ≤60mA (ปิดไฟแบ็คไลท์)
- อายุการใช้งานแบตเตอรี่: ≥30 ชั่วโมง (ไฟส่องสว่างเริ่มต้น) / ≥80 ชั่วโมง (ปิดไฟแบ็คไลท์)

ความจุแบตเตอรี่: แบตเตอรี่ลิเทียมชาร์จซ้ำได้ 4000mAh

- เวลาชาร์จ: ประมาณ 4 ชั่วโมง

ข้อกำหนดระบบ:

โหมดมีสาย / 2.4G: รองรับระบบ Windows ทั้งหมด (WIN XP, WIN7, WIN8, WIN10)

(อาจต้องใช้ไดรเวอร์สำหรับ WIN95 และ WIN98)

โหมด BT: รองรับคอมพิวเตอร์ Mac, โทรศัพท์/แท็บเล็ต Android และอุปกรณ์ iOS ที่รองรับ BT3.0, BT4.0, BT5.0 หรือสูงกว่า

- การเชื่อมต่อฮาร์ดแวร์:

USB มีสายและตัวรับสัญญาณ 2.4G รองรับการเล่นใช้งานทันที (Plug and Play)

ในโหมด BT ให้เลือกช่องที่ต้องการแล้วจับคู่กับอุปกรณ์ BT

Paramètres du produit

- Nombre de touches : 80 touches
- Course totale de la touche : 4,0 mm
- Touche FN multifonction
- Dimensions du produit : 333,29 × 147,39 × 43,17 ±0,5 mm
- Poids du produit : Env. 958,5g (hors câble/récepteur) / Env. 1007,5g (avec câble/récepteur)
- Tension/courant de charge : DC 5V ■■■ 1500mA
- Courant nominal : ≤200mA @3,7V (rétroéclairage par défaut) / ≤60mA (rétroéclairage éteint)
- Autonomie de la batterie : ≥30 heures (rétroéclairage par défaut) / ≥80 heures (rétroéclairage éteint)
- Capacité de la batterie : Batterie lithium rechargeable de 4000mAh
- Temps de charge : Env. 4 heures
- Configuration requise :

Mode filaire / 2.4G : Compatible avec tous les systèmes Windows (WIN XP, WIN7, WIN8, WIN10).

(Le pilote peut être requis pour WIN95 et WIN98.)

Mode BT : Compatible avec les Mac, smartphones/tablettes Android et appareils iOS prenant en charge BT3.0, BT4.0, BT5.0 ou supérieur

- Connexion matérielle :

USB filaire et récepteur 2.4G supportant le hot-swap (plug and play)

En mode BT, sélectionnez le canal correspondant et associez avec l' appareil BT

- Кількість клавіш: 80 клавіш
 - Повний хід клавіші: 4,0 мм
 - Багатофункціональна клавіша FN
 - Розміри продукту: 333,29 × 147,39 × 43,17 ±0,5 мм
 - Вага продукту: Близько 958,5 г (без кабелю/приймача) / близько 1007,5 г (з кабелем/приймачем)
 - Напруга/струм зарядки: DC 5V ■■■ 1500mA
 - Номінальний струм: ≤200mA @3,7V (підсвічування за замовчуванням) / ≤60mA (підсвічування вимкнено)
 - Тривалість роботи батареї: ≥30 годин (підсвічування за замовчуванням) / ≥80 годин (підсвічування вимкнено)
 - Ємність батареї: Акумуляторна літієва батарея 4000mAh
 - Час зарядки: близько 4 годин
 - Вимоги до системи:
- Провідний / 2.4G режим: Сумісний з усіма ОС Windows (WIN XP, WIN7, WIN8, WIN10).
(Може знадобитися драйвер для WIN95 і WIN98.)
- BT режим: Сумісний з Mac, Android смартфонами/планшетами та iOS пристроями з BT3.0, BT4.0, BT5.0 або вище
- Підключення обладнання:
- Провідний USB і 2.4G-приймач підтримують гарячу заміну (plug and play)
- У режимі BT оберіть потрібний канал та підключіть пристрій по BT

Parameter produk



- Jumlah Tombol: 80 tombol
 - Jarak Tekan Total: 4,0mm
 - Tombol FN Multifungsi
 - Dimensi Produk: 333,29 × 147,39 × 43,17 ±0,5mm
 - Berat Produk: Sekitar 958,5g (tanpa kabel/penerima) / sekitar 1007,5g (dengan kabel/penerima)
 - Tegangan/Arus Pengisian: DC 5V ■■■ 1500mA
 - Arus Terukur: ≤200mA @3,7V (pencahayaan standar) / ≤60mA (lampu latar mati)
 - Daya Tahan Baterai: ≥30 jam (pencahayaan standar) / ≥80 jam (lampu latar mati)
 - Kapasitas Baterai: Baterai Lithium isi ulang 4000mAh
 - Waktu Pengisian: Sekitar 4 jam
 - Persyaratan Sistem:
- Mode kabel / 2.4G: Kompatibel dengan semua sistem operasi Windows (WIN XP, WIN7, WIN8, WIN10).
(Driver mungkin diperlukan untuk WIN95 dan WIN98.)
- Mode BT: Kompatibel dengan komputer Mac, ponsel/tablet Android, dan perangkat iOS dengan BT3.0, BT4.0, BT5.0 atau di atasnya
- Koneksi Perangkat Keras:
- USB kabel dan penerima 2.4G mendukung hot-swap (plug and play)
- Pada mode BT, pilih saluran yang sesuai dan pasangankan dengan perangkat BT

- キー数: 80キー
- キーストローク: 4.0mm
- 多機能FNキー
- 製品サイズ: 333.29 × 147.39 × 43.17 ±0.5mm
- 製品重量: 約958.5g (ケーブル/レシーバー除く) / 約1007.5g (ケーブル/レシーバー含む)
- 充電電圧/電流: DC 5V ■■■ 1500mA
- 定格電流: ≤200mA @3.7V (標準バックライト) / ≤60mA (バックライトオフ)
- バッテリー持続時間: ≥30時間 (標準バックライト) / ≥80時間 (バックライトオフ)
- バッテリー容量: 4000mAh 充電式リチウムバッテリー
- 充電時間: 約4時間
- システム要件:

有線 / 2.4Gモード: 全てのWindows OSに対応 (WIN XP、WIN7、WIN8、WIN10)
(WIN95およびWIN98はドライバが必要な場合があります)

BTモード: BT3.0、BT4.0、BT5.0以上に対応するMac、Androidスマホ/タブレット、iOSデバイスに対応

ハードウェア接続:

有線USBおよび2.4Gレシーバーはホットスワップ (プラグ&プレイ) 対応

BTモードでは該当するチャンネルに切り替え、BTデバイスとペアリング

Thông số sản phẩm

- Số lượng phím: 80 phím
- Hành trình phím: 4,0mm
- Phím FN đa chức năng
- Kích thước sản phẩm: 333,29 × 147,39 × 43,17 ±0,5mm
- Trọng lượng sản phẩm: Khoảng 958,5g (không bao gồm cáp/bộ thu) / khoảng 1007,5g (bao gồm cáp/bộ thu)
- Điện áp/Dòng điện sạc: DC 5V ■■■ 1500mA
- Dòng điện định mức: ≤200mA @3,7V (đèn mặc định) / ≤60mA (tắt đèn nền)
- Thời lượng pin: ≥30 giờ (đèn mặc định) / ≥80 giờ (tắt đèn nền)
- Dung lượng pin: Pin lithium có thể sạc lại 4000mAh
- Thời gian sạc: Khoảng 4 giờ
- Yêu cầu hệ thống:

Chế độ có dây / 2.4G: Tương thích với tất cả hệ điều hành Windows (WIN XP, WIN7, WIN8, WIN10)
(Có thể cần trình điều khiển cho WIN95 và WIN98)

Chế độ BT: Tương thích với máy Mac, điện thoại/máy tính bảng Android và thiết bị iOS hỗ trợ BT3.0, BT4.0, BT5.0 hoặc cao hơn

• Kết nối phần cứng:

USB có dây và bộ thu 2.4G hỗ trợ hot-swap (cắm và chạy)

Ở chế độ BT, chọn kênh tương ứng và ghép nối với thiết bị BT



Dongguan Suoai Electronics CO.,LTD

www.aulastar.com

SOAI Industry Park, Huayu Street Changlong

Village Huangjiang Town Dongguan City

Guangdong Province

Execution Standard:GB/T 14081-2010

Made in China



Points de collecte sur www.quefairedemesdechets.fr

说明书技术要求:

- 1.成品尺寸:100x130mm
- 2.材质:120g铜版纸+打骑马钉
- 3.工艺:单黑双面印刷